

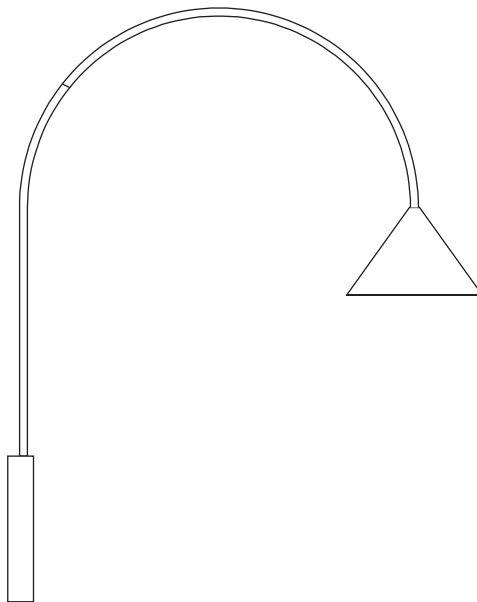
OZZ WALL

LS 70

by Paolo Cappello with Simone Sabatti



15 min



1x



3x



1x

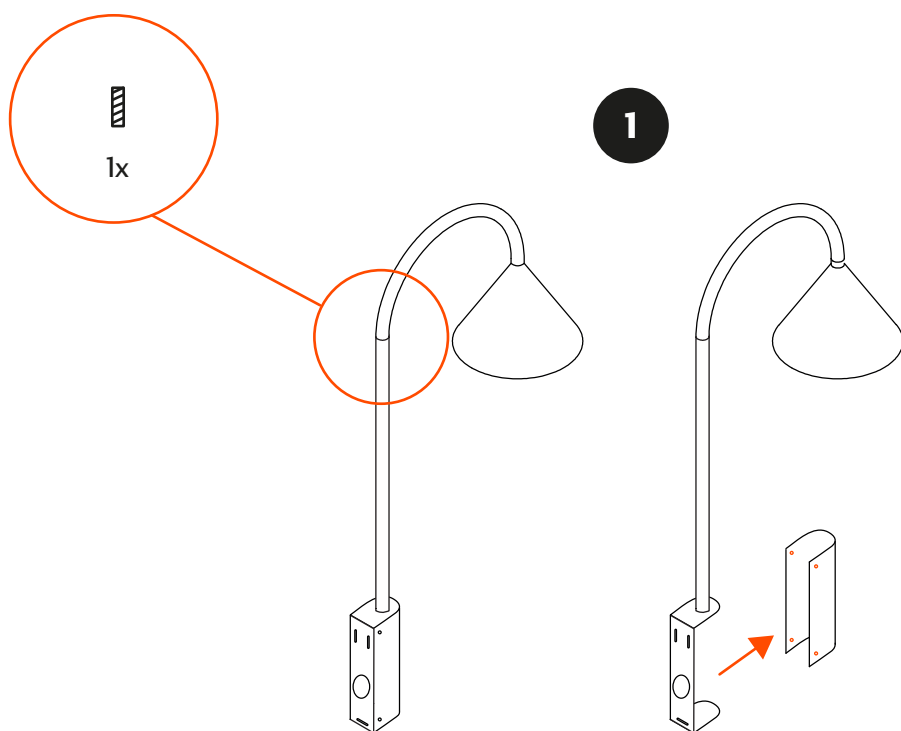
2mm



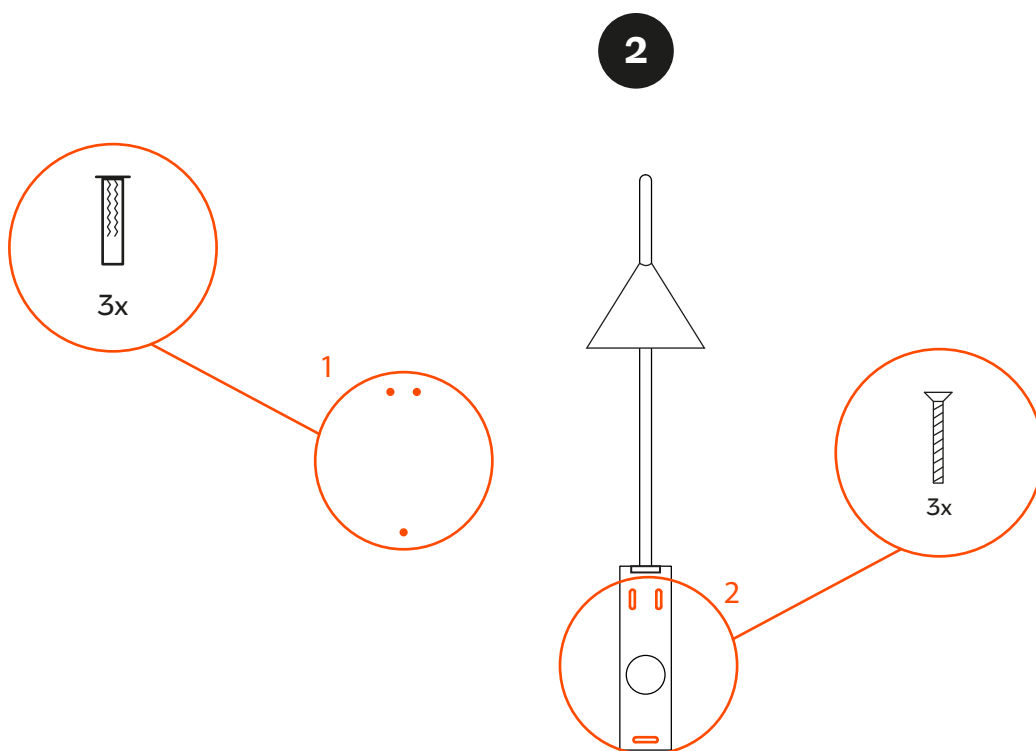
3x



miniforms

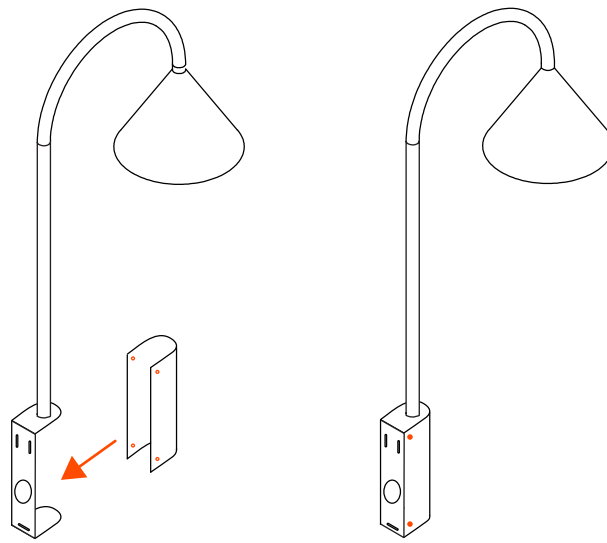


Per procedere al fissaggio della lampada al muro svita le 4 viti
presenti sul profilo del basamento, quindi rimuovi la placca.
To fix the lamp to the wall, twist off the 4 screws on the basement of the lamp.
Then, remove the plate.



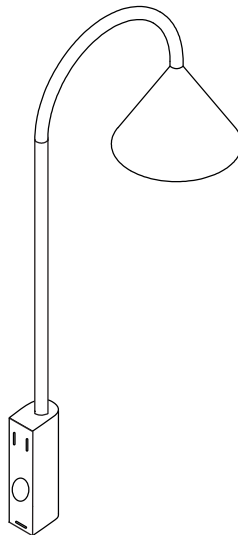
Posiziona i 3 tasselli in dotazione all'altezza desiderata. Successivamente,
blocca il corpo della lampada con le 3 viti e collegala alla rete.
Set the 3 plugs supplied at the desired height, so lock
the body lamp with the 3 screws. Then, connect it to the power grid.

3



Infine riposiziona la placca e fissala con le 4 viti rimosse inizialmente.
At last, reset the plate in the starting position, using the 4 screws.

4



Questo oggetto è stato progettato, realizzato e raffinato in Italia. Lo abbiamo costruito attentamente, per fargli vivere anni e anni di storie domestiche.
This piece was designed, made and refined in Italy. It was carefully built, to let it experience years and years of domestic stories.